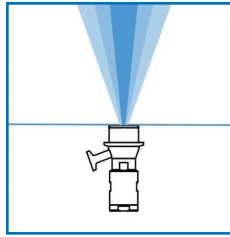


TANKO® GC



The compact TANKO® GC spray cleaner is used for cleaning the inside of vessels.

The special feature is its flush mounting to the inside of the vessel. That's why there is no risk of collision with agitators that need to be cleaned. It also allows for a variety of mounting positions which would not be possible with conventional cleaning devices.

TANKO® GC spray cleaners are therefore suitable for use as stand-alone devices, but also to support other existing conventional cleaning devices, especially in problem areas and spray shadow zones (agitators/undersides of blades, etc.).

Durable bellows made of either modif. PTFE or modif. UHMW-PE are used. UHMW-PE is the "PFAS-FREE" oldrnative solution.

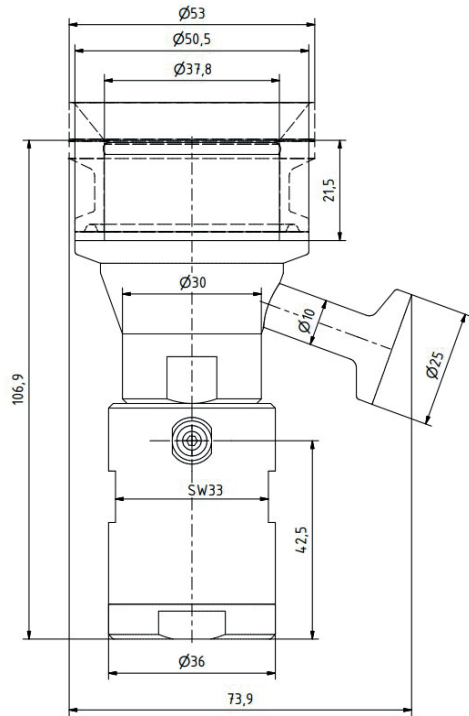
All consumption specifications are for orientation only.
The dimensions listed are in mm and are nominal dimensions.

Technical Parameters

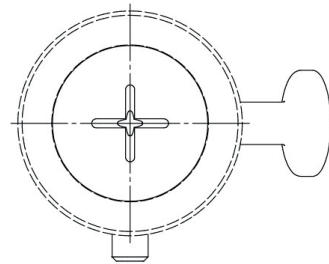
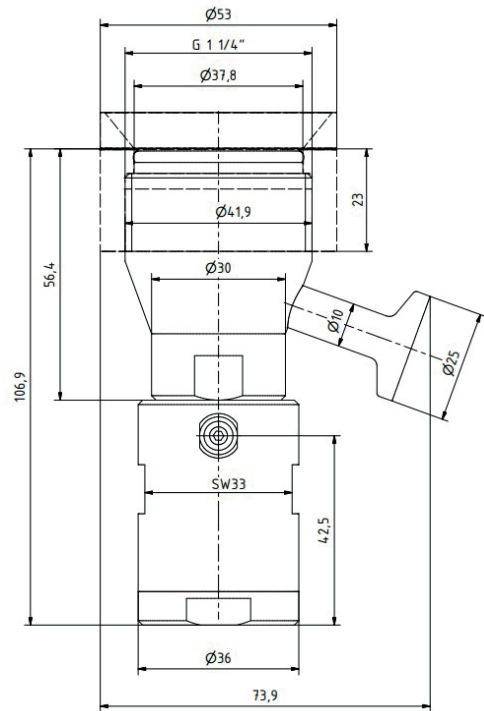
Spray angle:	40°
Materials:	1.4404, 1.4571 (spring), modif. UHMW-PE (PFAS FREE) / modif. PTFE, EPDM (optional FKM and FFKM)
Connections:	Medium connection: Clamp acc. DIN 32676 DN8/10 Series A; Thread BSP 3/8" Process connection: Clamp DN40; Tread BSP 1 1/4" Pneumatic connection Screw-in connection M5, AD4 (5/32")
Operating pressure:	Cleaning medium: 2 - 5 bar / 29 - 72.5 psi Pneumatics: min. 6 bar / 87 psi
Working temperature:	Cleaning medium: max. 95 °C / 203 °F
Ambient temperature:	PTFE: +5 - 150 °C / 41 - 302 °F UHMW-PE: +5 - 110 °C / 41 - 230 °F
Pressure in vessel:	During the process, no cleaning and device closed: 0 - 5 bar / 0 - 72.5 psi During cleaning: 0 - 0.5 bar / 0 - 7 psi
Volume flow rate:	0.6 - 1.1m³/h / 10.3 - 18.3l/min / 2.7 - 4.8 gpm (US)
Range:	0.5 - 2.2m at 0.5 - 4.0 bar / 1.64 - 7.2ft
Weight:	approx. 1 kg

Dimensions

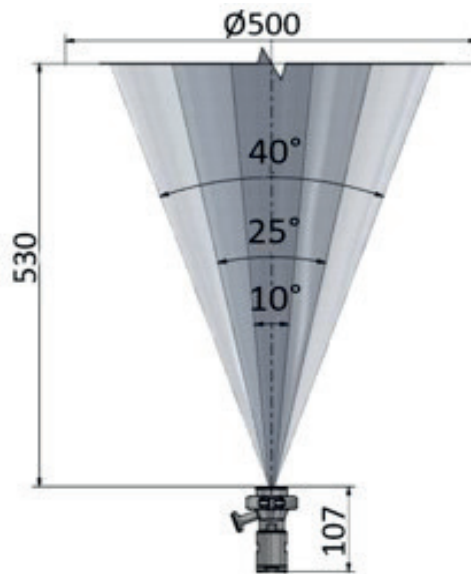
Clamp



Thread

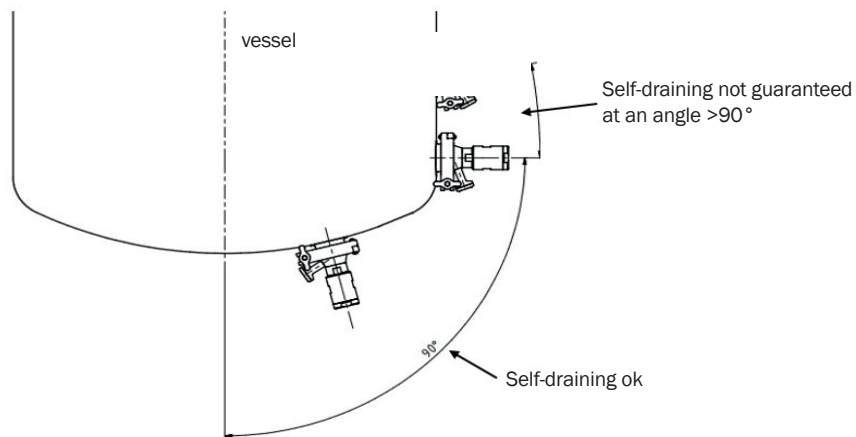


Spray Angle

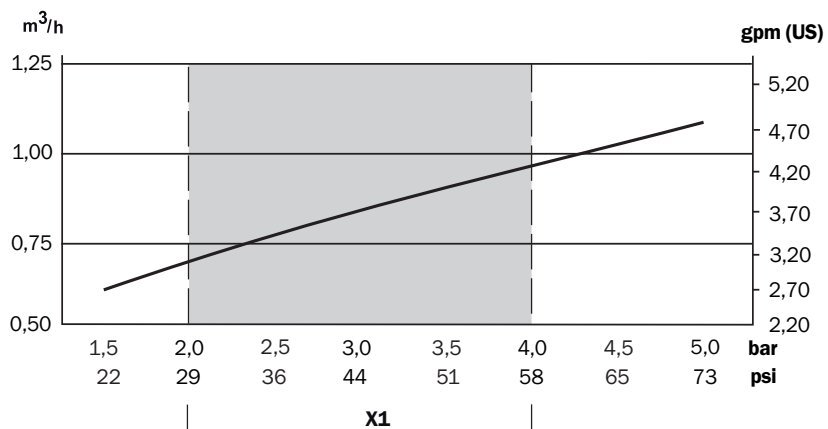


Installation advice regarding self-draining - Installation position

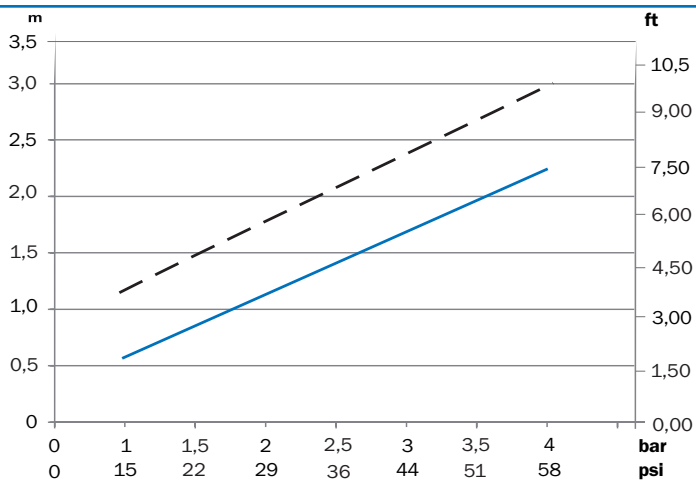
vertical (other installation positions possible)



Consumption Data and Throw Length Data



X1 - recommended operating pressure



— Cleaning - - - Wetting

Ordering Information

TANKO® GC						
Article no.	Process connection (PC)	Medium connection (MC)	Description	Bellow	Sealing material (O-rings in contact with the product)	Price /EUR
66 G40 39002 20	Clamp	Clamp	TANKO-GC40 CC FB PTFE E	mod. PTFE	EPDM	650.00
66 G40 39012 20	Thread	Clamp	TANKO-GC40 GC FB PTFE E	mod. PTFE		650.00
66 G40 39001 20	Clamp	Clamp	TANKO-GC40 CC FB Endu E	modi. UHMW-PE		865.00
66 G40 39011 20	Thread	Clamp	TANKO-GC40 GC FB Endu E	modi. UHMW-PE		865.00
66 G40 51102 20	Clamp	Thread	TANKO-GC40 CG FB PTFE E	mod. PTFE		650.00
66 G40 51112 20	Thread	Thread	TANKO-GC40 GG FB PTFE E	mod. PTFE		650.00
66 G40 51101 20	Clamp	Thread	TANKO-GC40 CG FB Endu E	modi. UHMW-PE		865.00
66 G40 51111 20	Thread	Thread	TANKO-GC40 GG FB Endu E	modi. UHMW-PE		865.00
66 G4V 39002 20	Clamp	Clamp	TANKO-GC40 CC FB PTFE V	mod. PTFE	FKM	670.00
66 G4V 39012 20	Thread	Clamp	TANKO-GC40 GC FB PTFE V	mod. PTFE		680.00
66 G4V 39001 20	Clamp	Clamp	TANKO-GC40 CC FB Endu V	modi. UHMW-PE		885.00
66 G4V 39011 20	Thread	Clamp	TANKO-GC40 GC FB Endu V	modi. UHMW-PE		895.00
66 G4V 51102 20	Clamp	Thread	TANKO-GC40 CG FB PTFE V	mod. PTFE		670.00
66 G4V 51112 20	Thread	Thread	TANKO-GC40 GG FB PTFE V	mod. PTFE		680.00
66 G4V 51101 20	Clamp	Thread	TANKO-GC40 CG FB Endu V	modi. UHMW-PE		885.00
66 G4V 51111 20	Thread	Thread	TANKO-GC40 GG FB Endu V	modi. UHMW-PE		895.00
66 G4F 39002 20	Clamp	Clamp	TANKO-GC40 CC FB PTFE F	mod. PTFE	FFKM	815.00
66 G4F 39012 20	Thread	Clamp	TANKO-GC40 GC FB PTFE F	mod. PTFE		815.00
66 G4F 39001 20	Clamp	Clamp	TANKO-GC40 CC FB Endu F	modi. UHMW-PE		1.030.00
66 G4F 39011 20	Thread	Clamp	TANKO-GC40 GC FB Endu F	modi. UHMW-PE		1.030.00
66 G4F 51102 20	Clamp	Thread	TANKO-GC40 CG FB PTFE F	mod. PTFE		815.00
66 G4F 51112 20	Thread	Thread	TANKO-GC40 GG FB PTFE F	mod. PTFE		815.00
66 G4F 51101 20	Clamp	Thread	TANKO-GC40 CG FB Endu F	modi. UHMW-PE		1.030.00
66 G4F 51111 20	Thread	Thread	TANKO-GC40 GG FB Endu F	modi. UHMW-PE		1.030.00

One welding adapter (container connection) is included with each device.

Mounting bracket for sensor query



To order, insert an "A" in the 13th position of the TANKO® GC Typeicle number.

Inductive sensor not included in delivery.
 Recommendation AWH: Bi3U-M12-AP6X-H1141
 Type.-no. 390090

Price markup: 100.00 €

Accessories

Blind Plugs Clamp/Thread

Article no.	Description	Price/EUR
66RF0400BC020	Blind Plug for welding adapter PC Clamp for TANKO® GC40	56.80
66RF0400BG020	Blind Plug for welding adapter PC Thread for TANKO® GC40	75.00
1051900001230	Blind clamp cap Ø25 for MC Clamp for TANKO® GC40	10.40
417051142	Cap G3/8" for MC thread for TANKO® GC40	16.00

Welding Adapter (included in the device)

Article no.	Description	Price/EUR
66RF 040 OAC 020	Welding adapter for TANKO® GC40/RF40 Clamp	48.00
66RF 040 OAG 020	Welding adapter for TANKO® GC40/RF40 Thread	48.00

Services

Measuring Report

Number of measuring points	Description	Price/EUR
3	Roughness	35.00
5	Roughness	55.00