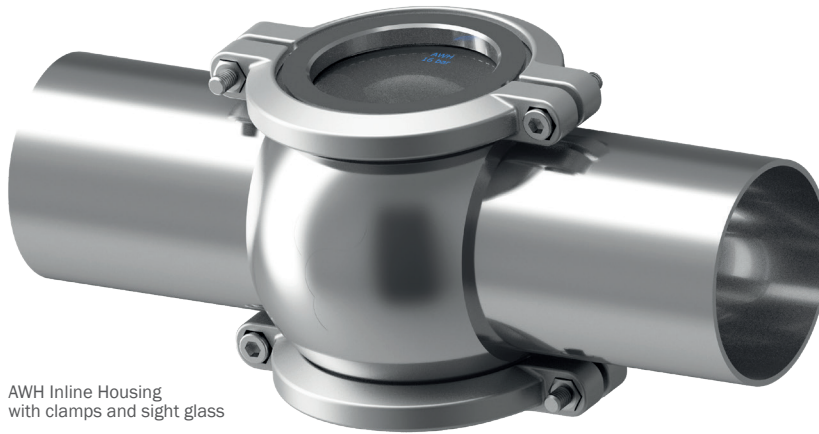


# Inline Housing



**General**

The hygienic AWH inline housings are the ideal basis for connecting a wide range of devices, valves and monitoring sensors. They are primarily used in the food, cosmetics and pharmaceutical industries. The process connection is an universal hygienic connection that has been established on the market for decades. Inline housings can be installed flexibly, both vertically and horizontally. They are also CIP and SIP-capable and enable residue-free cleaning.



AWH Inline Housing with clamps and sight glass

**Technical Data**

|                               |  |
|-------------------------------|--|
| <b>Connection variant:</b>    | Weld-on ends DIN EN 10357/ DIN 11866 (suitable for orbital welding technology) |
| <b>Process connection:</b>    | Compatible with all available measuring instruments (variant N)                |
| <b>Material:</b>              | 1.4404/ 316L (in contact with the product)                                     |
| <b>Surface:</b>               | Ra ≤ 0,8 µm (in contact with the product)                                      |
| <b>Operating pressure</b>     | max. 16 bar/ 232 psi   |
| <b>Operating temperature:</b> | max. 95 °C / 149 °F<br>max. 140 °C/ 284 °F (CIP/SIP cleaning, short-term)      |
| <b>Sealing variants:</b>      | EPDM, FKM, HNBR  |
| <b>Options:</b>               | Sealing lid, sight glass, LED sight glass, sampling valve                      |

**Application**

**Process Technology**

Adaptation of valves, magnetic filters, ...



**Measurement**

Adaptation of measurement instruments



**Visual Inspection**

Adaptation of sight glasses

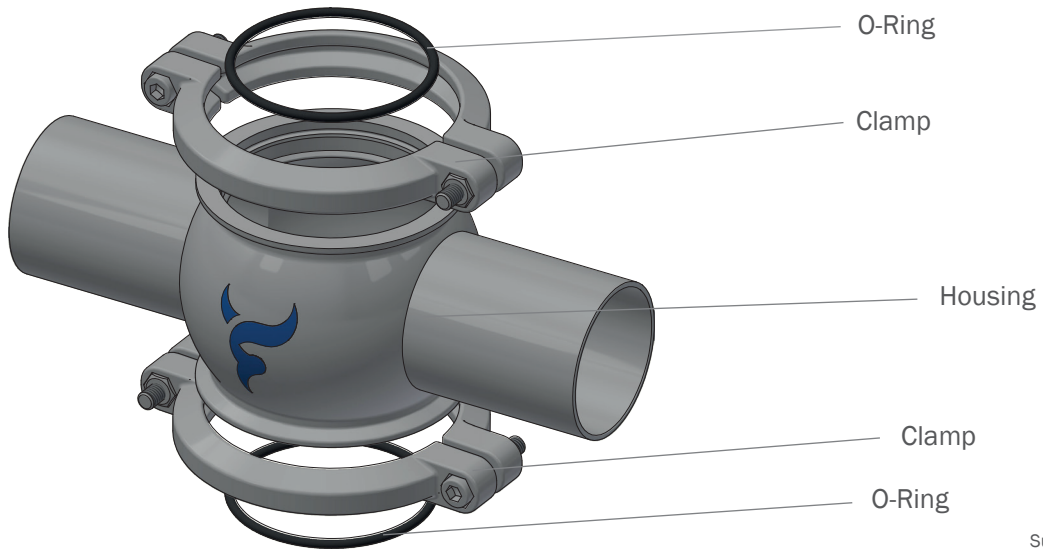


**Connections**

Simple and flexible pipe connections



**Structure - standard scope of delivery**



Supplied in individual parts!

**Versions**

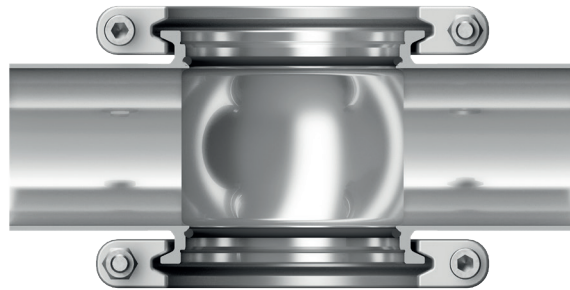
**Standard**  
with Clamp

with blind plate

with sight glass

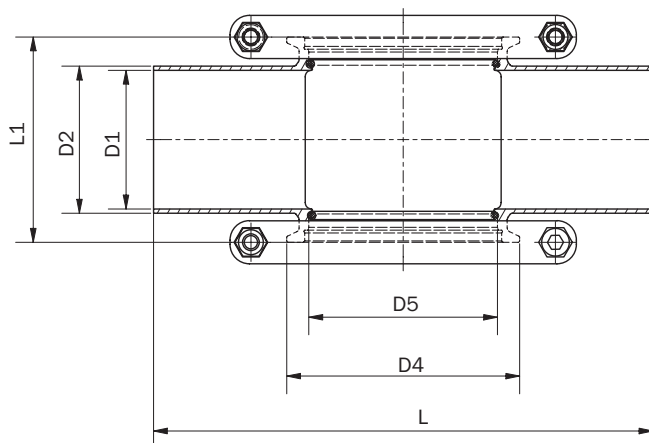
LED lighting for  
sight glass

with  
sampling valve



Inline Housing

**Dimensions and ordering information - Standard**

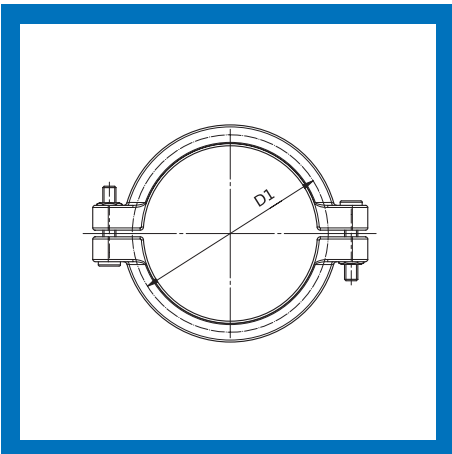


Supplied in individual parts!

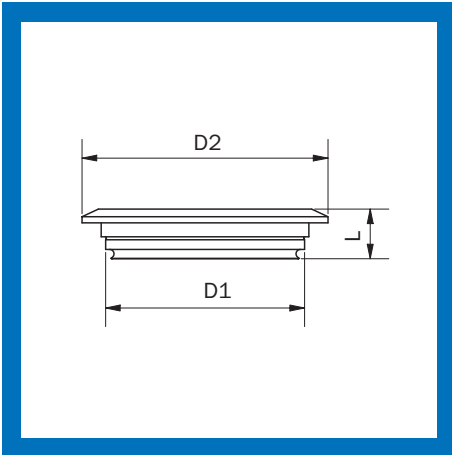
| DN DIN |                    |     |     |    |    |     |     |             | 1.4404/EPDM      | 1.4404/FKM       | 1.4404/HNBR      |
|--------|--------------------|-----|-----|----|----|-----|-----|-------------|------------------|------------------|------------------|
| Size   | Process connection | D1  | D2  | D4 | D5 | L   | L1  | Weight (kg) | Art.no.          | Art.no.          | Art.no.          |
| DN25   | F                  | 26  | 29  | 66 | 50 | 180 | 50  | 1.010       | 63000 201 025 30 | 63000 202 025 30 | 63000 203 025 30 |
| DN40   | N                  | 38  | 41  | 84 | 68 | 180 | 62  | 1.028       | 63000 201 040 30 | 63000 202 040 30 | 63000 203 040 30 |
| DN50   | N                  | 50  | 53  | 84 | 68 | 180 | 74  | 1.141       | 63000 201 050 30 | 63000 202 050 30 | 63000 203 050 30 |
| DN65   | N                  | 66  | 70  | 84 | 68 | 250 | 90  | 1.640       | 63000 201 065 30 | 63000 202 065 30 | 63000 203 065 30 |
| DN80   | N                  | 81  | 85  | 84 | 68 | 250 | 105 | 1.917       | 63000 201 080 30 | 63000 202 080 30 | 63000 203 080 30 |
| DN100  | N                  | 100 | 104 | 84 | 68 | 250 | 124 | 2.144       | 63000 201 100 30 | 63000 202 100 30 | 63000 203 100 30 |
| DN125  | N                  | 125 | 129 | 84 | 68 | 250 | 149 | 2.422       | 63000 201 125 30 | 63000 202 125 30 | 63000 203 125 30 |
| DN150  | N                  | 150 | 154 | 84 | 68 | 250 | 174 | 2.924       | 63000 201 150 30 | 63000 202 150 30 | 63000 203 150 30 |

| DN Inch |                    |       |       |    |    |     |       |             | 1.4404/EPDM      | 1.4404/FKM       | 1.4404/HNBR      |
|---------|--------------------|-------|-------|----|----|-----|-------|-------------|------------------|------------------|------------------|
| Size    | Process connection | D1    | D2    | D4 | D5 | L   | L1    | Weight (kg) | Art.no.          | Art.no.          | Art.no.          |
| 1"      | F                  | 22.1  | 25.4  | 66 | 50 | 180 | 46    | 1.05        | 63000 201 054 30 | 63000 202 054 30 | 63000 203 054 30 |
| 1 1/2"  | N                  | 34.8  | 38.1  | 84 | 68 | 180 | 59    | 1.06        | 63000 201 057 30 | 63000 202 057 30 | 63000 203 057 30 |
| 2"      | N                  | 47.5  | 50.8  | 84 | 68 | 180 | 71.6  | 1.24        | 63000 201 058 30 | 63000 202 058 30 | 63000 203 058 30 |
| 2 1/2"  | N                  | 60.2  | 63.5  | 84 | 68 | 250 | 84.3  | 1.56        | 63000 201 059 30 | 63000 202 059 30 | 63000 203 059 30 |
| 3"      | N                  | 72.9  | 76.2  | 84 | 68 | 250 | 97    | 1.62        | 63000 201 060 30 | 63000 202 060 30 | 63000 203 060 30 |
| 4"      | N                  | 97.38 | 101.6 | 84 | 68 | 250 | 121.5 | 2.17        | 63000 201 062 30 | 63000 202 062 30 | 63000 203 062 30 |

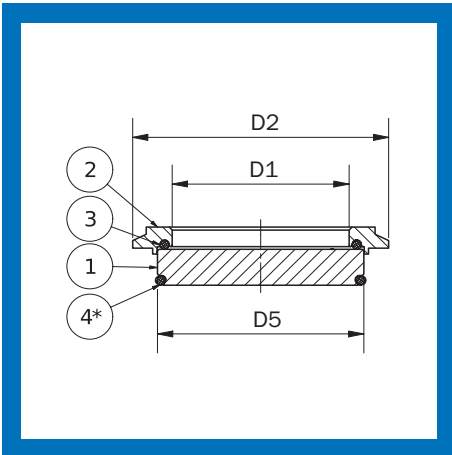
**Dimensions and ordering information - Accessories**



| Clamp |                    |             |                  |
|-------|--------------------|-------------|------------------|
| D1    | Process-connection | Weight [kg] | 1.4308           |
|       |                    |             | Art.no.          |
| 69    | F                  | 0.200       | 63011 000 066 00 |
| 89    | N                  | 0.225       | 63011 000 084 00 |
|       |                    |             |                  |
|       |                    |             |                  |
|       |                    |             |                  |
|       |                    |             |                  |
|       |                    |             |                  |
|       |                    |             |                  |
|       |                    |             |                  |
|       |                    |             |                  |

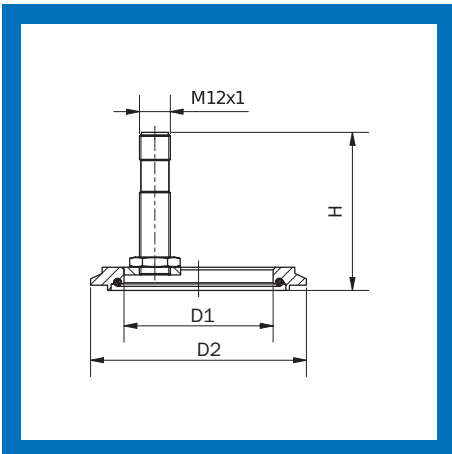


| Blind Plate |    |    |                    |             |                  |
|-------------|----|----|--------------------|-------------|------------------|
| D1          | D2 | L  | Process connection | Weight [kg] | 1.4404           |
|             |    |    |                    |             | Art.no.          |
| 50          | 66 | 17 | F                  | 0.30        | 63011 000 066 30 |
| 68          | 84 | 17 | N                  | 0.55        | 63011 000 084 30 |
|             |    |    |                    |             |                  |
|             |    |    |                    |             |                  |
|             |    |    |                    |             |                  |
|             |    |    |                    |             |                  |
|             |    |    |                    |             |                  |
|             |    |    |                    |             |                  |
|             |    |    |                    |             |                  |

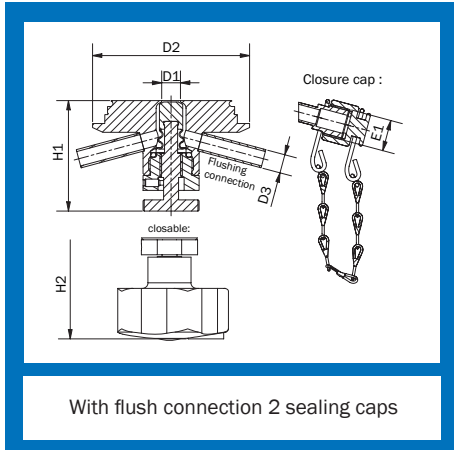


| Sight glass with retaining ring and O-ring   |    |    |                    |             |                  |
|--|----|----|--------------------|-------------|------------------|
| D1   | D2 | D5 | Process connection | Weight [kg] | 1.4404/EPDM      |
|  |    |    |                    |             | Art.no.          |
| 40   | 66 | 50 | F                  | 0.140       | 63012 000 066 70 |
| 58   | 84 | 68 | N                  | 0.215       | 63012 000 084 70 |
| Set consisting of (1) Sight glass (2) Retaining ring (3) O-ring<br>(4)* O-ring must be ordered seperately! |    |    |                    |             |                  |

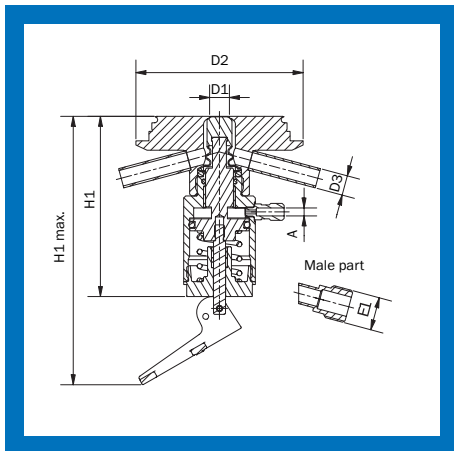
| O-ring for sight glass with retaining ring |                  |                  |                  |
|--|------------------|------------------|------------------|
| Process connection                         | EPDM             | FKM              | HNBR             |
|  | Art.no.          | Art.no.          | Art.no.          |
| F  | 10605 000 042 06 | 10605 000 042 12 | 10605 000 042 03 |
| N  | 10605 000 060 00 | 10605 000 060 01 | 10605 000 060 02 |



| Sight glass light with retaining ring and O-ring |    |      |                    |             |                  |
|--|----|------|--------------------|-------------|------------------|
| D1   | D2 | H    | Process connection | Weight [kg] | 1.4404/EPDM      |
|  |    |      |                    |             | Art.no.          |
| 40   | 66 | 61.5 | F                  | 0,120       | 63012 000 066 90 |
| 58   | 84 | 62   | N                  | 0,668       | 63012 000 084 90 |
|  |    |      |                    |             |                  |
|  |    |      |                    |             |                  |
|  |    |      |                    |             |                  |
|  |    |      |                    |             |                  |
|  |    |      |                    |             |                  |
|  |    |      |                    |             |                  |



| Sampling Valve hygienic connection |    |    |      |    |    |                    |             |
|------------------------------------|----|----|------|----|----|--------------------|-------------|
| D2                                 | D1 | D3 | E1   | H1 | H2 | Process connection | Weight [kg] |
| <b>without flush connection</b>    |    |    |      |    |    |                    |             |
| 66                                 | 10 | 10 |      | 59 | 93 | F                  | 0.492       |
| 66                                 | 10 | 10 |      | 59 | 93 | F                  | 0.555       |
| 66                                 | 10 | 10 | 3/8" | 59 | 93 | F                  | 0.542       |
| 66                                 | 10 | 10 | 3/8" | 59 | 93 | F                  | 0.605       |
| 84                                 | 10 | 10 |      | 59 | 93 | N                  | 0.733       |
| 84                                 | 10 | 10 |      | 59 | 93 | N                  | 0.796       |
| <b>with flush connection</b>       |    |    |      |    |    |                    |             |
| 66                                 | 10 | 10 |      | 59 | 93 | F                  | 0.496       |
| 66                                 | 10 | 10 |      | 59 | 93 | F                  | 0.559       |
| 66                                 | 10 | 10 | 3/8" | 59 | 93 | F                  | 0.596       |
| 66                                 | 10 | 10 | 3/8" | 59 | 93 | F                  | 0.659       |
| 84                                 | 10 | 10 |      | 59 | 93 | N                  | 0.737       |
| 84                                 | 10 | 10 |      | 59 | 93 | N                  | 0.800       |



| Pneumatic Sampling Valve hygienic connection |   |    |    |      |         |      |                    |             |
|--|---|----|----|------|---------|------|--------------------|-------------|
| D2   | A | D1 | D3 | E1   | H1 max. | H1   | Process connection | Weight [kg] |
| <b>without flush connection</b>              |   |    |    |      |         |      |                    |             |
| 66   | 4 | 10 | 10 |      | 135     | 90.5 | F                  | 0.699       |
| 66   | 4 | 10 | 10 | 3/8" | 135     | 90.5 | F                  | 0.714       |
| 84   | 4 | 10 | 10 |      | 135     | 90.5 | N                  | 0.940       |
| <b>with flush connection</b>                 |   |    |    |      |         |      |                    |             |
| 66   | 4 | 10 | 10 |      | 135     | 90.5 | F                  | 0.703       |
| 66   | 4 | 10 | 10 | 3/8" | 135     | 90.5 | F                  | 0.733       |
| 84   | 4 | 10 | 10 |      | 135     | 90.5 | N                  | 0.944       |

| Order details Sampling Valves  |  |   |   |  |
|--|--|---|---|--|
|  | Sampling Valve hyg. conn. - without flush connection | Sampling Valve hyg. conn. - with flush connection | Pneum. Sampling Valve hyg. conn. - without flush connection | Pneum. Sampling Valve hyg. conn. - with flush connection |
| Version  | Art.no.  | Art.no.   | Art.no.   | Art.no.  |
| 1.4404 (316L)<br>Process connection F                                | 413C 00 002  | 413C 00 202                                       | 416C 00 002   | 416C 00 202  |
| 1.4404 (316L)<br>Process connection N                                | 413B 00 002  | 413B 00 202                                       | 416B 00 002   | 416B 00 202  |
| 1.4404 (316L) with male part<br>Process connection F                 | 417C 51 002  | 417C 51 202                                       | 418C 51 002   | 418C 51 202  |
| 1.4404 (316L) lockable<br>Process connection F                       | 419C 00 002  | 419C 00 202                                       |   |  |
| 1.4404 (316L) lockable<br>Process connection N                       | 419B 00 002  | 419B 00 202                                       |   |  |
| 1.4404 (316L) with male part<br>and lockable<br>Process connection F | 41AC 51 002  | 41AC 51 202                                       |   |  |



Armaturenwerk Hötensleben GmbH  
 Schulstr. 5-6  
 D-39393 Hötensleben

Tel: +49 39405 92-0  
 Fax: +49 39405 92-111  
 E-Mail: info@awh.eu  
 http://www.awh.eu

## NEUMO Ehrenberg Group

Armaturenwerk Hötensleben GmbH (Germany)

